



## **FAT SHEEP** rib

Rug made of pure new wool  
*Design Pudelskern*



*Fat Sheep rib* is manufactured exclusively out of the wool from the Tyrolean Alpine Sheep. The entirely manufacturing process is done in the Tyrol. The wool for *Fat Sheep rib* rugs is washed in Europe's state of the art wool washing plant in the Tyrolean valley of Ötztal. Due to the gentle washing process the wool keeps its naturally given characteristics. The regional manufacturing allows traceability, a sustainable production and guarantees for the high quality of the rugs.

During the washing process the wool is treated with a especially developed, natural coating through which the wool becomes more resistant against house dust mites and reaches the B1 level (of low flammability). This coating does not alter the characteristics of the wool but makes it also suitable e.g. for allergic persons.

*Fat Sheep rib* is woven with alternating thicker and thinner wefts.

### **Fat Sheep is offered in four natural colours**

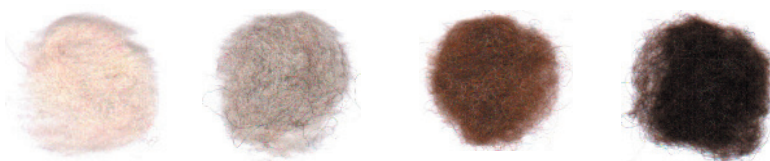
500 natural white (*ecru*)

521 natural light grey

530 natural brown

520 natural black

all colours come from undyed wool and partly result from blend of natural colours



### **Standard sizes**

140 x 200 cm

170 x 240 cm

200 x 250 cm

All customized sizes are available.

max. width 400 cm

max. length 800 cm (longer sizes on enquiry)

### **Weight**

about 4,50 kg/ sqm

### **Delivery time**

by arrangement, normally between 5 – 8 weeks

### **Terms**

by arrangement

### **Transport**

ex works (EXW) A-6441 Umhausen  
can be negotiated on the single order

### **Distribution**

Öztaler Schafwollzentrum Regensburger GmbH  
Joachim Regensburger  
info@regensburger.eu  
www.regensburger.eu